

IDC6

SOFTWARE

UPDATE

CAR 2026.06



IDC6 CAR 2026.06

Software update

Starting from the **IDC6** version, new terminology is introduced to describe the software versions, divided in two types of updates: **CORE** and **Environment**.



1) The CORE update is the evolution of the unified software architecture, shared by all the environments.

This architecture optimises access to the information and improves the efficiency in running the functions, guaranteeing faster response times and significantly reduced loading times.

The **CORE** update follows a progressive numbering that starts from **1** and reflects the developments and improvements made at an application level.

2) The Environment update is about the specific software version for each environment.

Its numbering is divided in two parts:

- The first number is the year in which the update is released (for example, **2026.x**);
- The second number is a progressive index that increases with each new update released during the year (for example, **2026.06**).

This new assignment allows clearly distinguishing between the architecture innovations (CORE) and the specific updates for the various environments.

The **IDC6 CAR 2026.06** software update is the latest evolution of the famous diagnostic software by **TEXA**.

It is the peak of innovation and integration in the field of automotive diagnostics, as it can interact and continuously adapt to the new features in the industry.

It creates the perfect synergy between **TEXA's** display units and vehicle interfaces, taking repair professionals always to the core of multi-brand and multi-environment diagnostics.

Its advanced architecture and **an ever more intuitive diagnostic interface** provide an incredible diagnostic experience, also thanks to the introduction of **innovative diagnostic functions that exploit the potential of Artificial Intelligence (AI)**, which allow users a quick and precise access to the diagnostic information they need in order to solve any kind of problem in the vehicle.



Furthermore, **IDC6** updates itself constantly.

This allows being always at the forefront of modern vehicle diagnostics.

The system was designed to face the challenges of the future of diagnosis.

In fact, with the evolution of the technologies that feature the latest-generation mobility industry, the need for authentication in order to perform protected operations or settings provided for by the manufacturers becomes more and more common.

IDC6 is an intelligent application as it has an evolutionary capability to satisfy user needs over time, by learning from their behaviours and recommending the use of certain functions that are used less.

IDC6 CAR 2026.06 includes the **update of as many as 49 makes**. The work of TEXA's technical developers also led to further increasing the coverage of the **ADAS, electric and hybrid vehicles, interactive "DASHBOARD" screens** with over **1540** new possible selections, and **wiring diagrams**.

IDC6 CAR 2026.06 is characterised by over **2060 new possible selections** for the major makes on the market worldwide, among which:

ABARTH, ACURA, ALFA ROMEO, ALPINE, ASTON MARTIN, AUDI, BENTLEY, BMW, BUICK, BYD, CADILLAC, CHERY, CHEVROLET, CHRYSLER, CITROËN, CUPRA, DACIA, DAIHATSU, DATSUN, DODGE, EMC, DR, DS, EVO, FERRARI, FIAT, FISHER, FORD, FOTON, GENESIS, GEELY, GMC, GREAT WALL, GRECAV, HOLDEN, HONDA, HUMMER, HYUNDAI, INEOS, INFINITI, ISUZU, IVECO, JAGUAR, JAC MOTOR, JEEP, KAIYI AUTO, KG MOBILITY, KIA, LADA, LANCIA, LAND ROVER, LAMBORGHINI, LDV, LEXUS, LINCOLN, LOTUS, LYNK & CO, MAN, MAHINDRA, MAYBACH, MASERATI, MAXUS, MAZDA, MCLAREN, MERCEDES-BENZ, MERCURY FORD, MG, MINI, MITSUBISHI, MOBILIZE, NEXTEM, NISSAN, OPEL, PERODUA, PEUGEOT, PGO AUTOMOBILES, PLYMOUTH, POLESTAR, PONTIAC, PORSCHE, RAM, RAVON, RENAULT, SAMSUNG, ROEWE, ROLLS-ROYCE, SAAB, SATURN, SCION, SEAT, SKODA, SPORTEQUIPE, SMART, SSANGYONG, SUBARU, SUZUKI, SWM, TATA, TESLA, TOYOTA, TROLLER, UAZ, VENUCIA, VOLKSWAGEN, VOLVO, WULING, XEV.

NOTICE FOR CUSTOMERS WHO OWN A Windows PC

Dear Customers, to make the most of all the functions in the TEXA **IDC6** diagnostic software, we recommend updating your Personal Computers to the latest version of the Windows 11 operating system.

OTHER NOTICES

At each software release, the introduction of a new vehicle or system within the **TEXA** database is marked by the specific identification label **NEW** that highlights it has been integrated.

Please note that the software updates are not available for unsupported tools.

We recommend checking the compatibility and minimum system requirements for **IDC6** on the webpage **www.texa.com/system**.

For more information, please contact your trusted TEXA dealer.



New features included

- EXTENDED AUTOSCANVIN NEW MODE
- DIAGNOSTIC DASHBOARDS AND TGS3 DASHBOARDS
- DIAGNOSIS

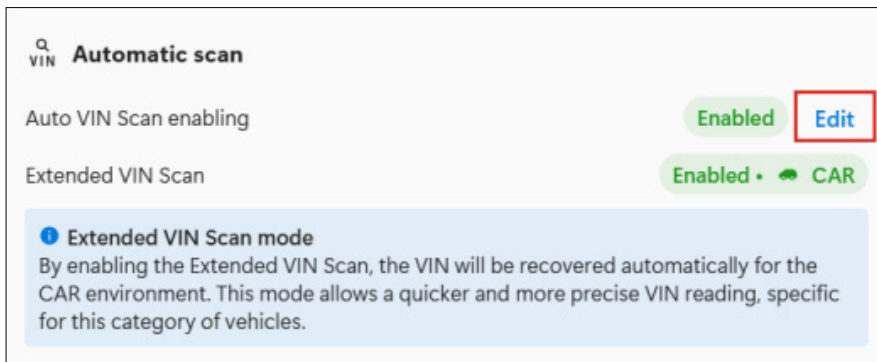
EXTENDED AUTOSCANVIN NEW MODE

With the new **CAR 2026.06** software update, the new **Extended AutoScanVIN mode** is introduced. By enabling the Extended AutoScanVIN, **IDC6** the VIN will be recovered automatically for the **CAR** environment. This mode, if enabled, allows a quicker and more precise VIN reading, specific for this category of vehicles.

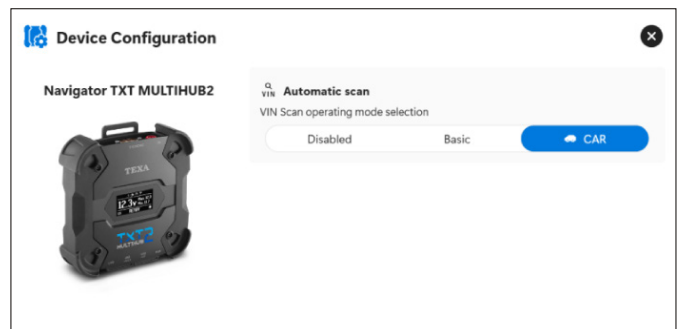
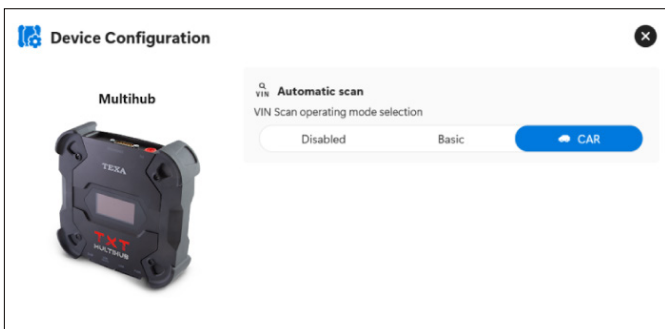
This new mode is enabled automatically after the firmware update only if you own the following devices:

- NAVIGATOR TXT MULTIHUB
- NAVIGATOR TXT MULTIHUB 2

If the user has the software **IDC6** alongside other installed operating systems in addition to the licence **CAR**, the Extended AutoScanVIN will not be enabled automatically, the user will need to enable it manually. You can enable your device using the dedicated button.



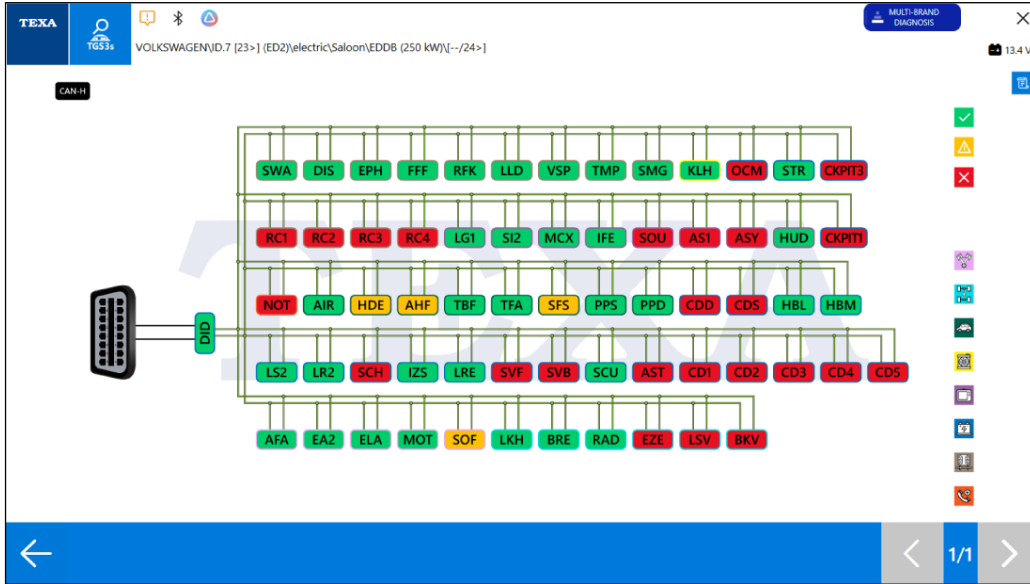
The configuration of your device will then be displayed.



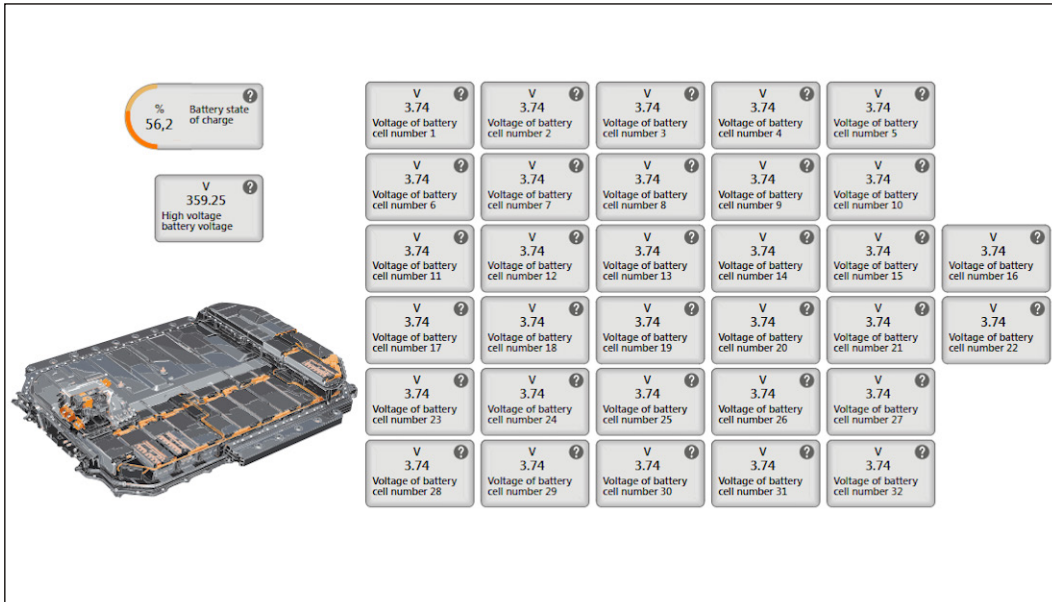
DIAGNOSTIC DASHBOARDS AND TGS3 DASHBOARDS

New **TGS3 DASHBOARDS** have been added for **VOLKSWAGEN** vehicles.

Below are a few example images:

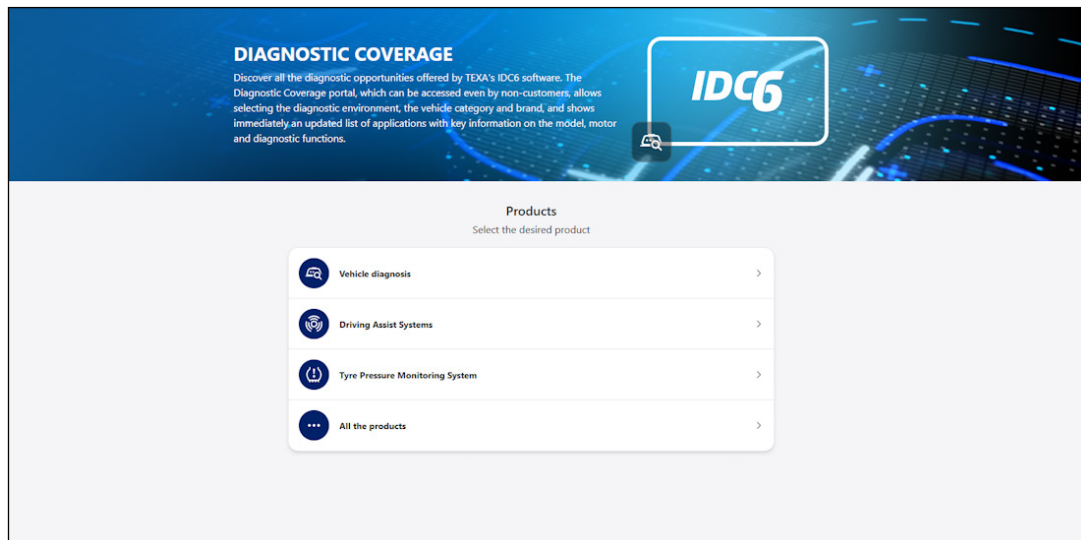


New **PARAMETER DASHBOARDS**.



DIAGNOSIS

In the **"Help / support - Diagnostic coverage list"** section, users can find the updates related to the diagnostic coverage available in the **IDC6 CAR 2026.06** software.



NOTE:

For further information see our website www.texa.com in the DIAGNOSTIC COVERAGE section.

CAR

AUDI

New diagnostic systems have been developed for the models:

- A3 [24>] (8YS) Sedan Facelift
- A3 [24>] (8YA) Sportback Facelift
- A3 [24>] (8YH) Allstreet Facelift
- S3 [24>] (8YA) Sportback Facelift
- S3 [24>] (8YS) Sedan Facelift
- RS3 [25>] (8YA) Sportback Facelift
- RS3 [25>] (8YS) Sedan Facelift
- A5 [24>] (FU5) Avant
- A5 [24>] (FU2)
- RS5 [26>] (FU2)
- RS5 [26>] (FU5) Avant
- S5 [24>] (FU2)
- S5 [24>] (FU5) Avant
- Q3 [25>] (FJB)
- Q3 [25>] (FJN) Sportback
- Q4 E-Tron [21>] (F4B)



- Q4 E-Tron [21>] (F4N) Sportback
- Q5 [25>] (GUB)
- Q5 [25>] (GUN) Sportback
- SQ5 [25>] (GUB)
- SQ5 [25>] (GUN) Sportback
- A6 [25>] (FN2)
- A6 [25>] (FN5) Avant
- A6 E-Tron [25>] (GH5) Avant
- A6 E-Tron [25>] (GHA) Sportback
- S6 E-Tron [25>] (GH5) Avant
- S6 E-Tron [25>] (GHA) Sportback
- Q6 E-Tron [24>] (GF)
- Q6 E-Tron [24>] (GF) Sportback
- SQ6 E-Tron [24>] (GF)
- SQ6 E-Tron [24>] (GF) Sportback

BYD

New diagnostic systems have been developed for the models:

- Atto 2 [24>]
- Dolphin Mini [24>]
- e5 [16>]
- Seal 6 [24>]
- Seal U [23>]
- Song Plus [20>23]
- Song Plus [23>] Facelift

CHERY

New diagnostic systems have been developed for the models:

- Tiggo [07>13]
- Tiggo 3 [14>23]

CHEVROLET

New diagnostic systems have been developed for the model:

- Express Max [25>] (SV65C)

CITROEN

New diagnostic systems have been developed for the models:

- C3 [24>] (CC21E)
- C3 Aircross [24>] (CC24E)
- C3 [22>] (CC21)
- C4 [20>] (C41)
- C4 X [22>] (C43)



- C5 X [21>] (E43)
- C5 Aircross [25>] (CR3)
- SpaceTourer [16>] (K0)
- Jumpy [16>] (K0)
- Berlingo [18>] (K9)
- Dispatch [16>] (K0)
- Jumper [24>]
- Relay [24>]

CUPRA

New diagnostic systems have been developed for the models:

- Born [21>] (K11)
- Formentor [24>] (KM) Facelift
- Leon [24>] (KL1) Facelift
- Leon [24>] (KL8) Sportstourer Facelift
- Tavascan [23>] (KR)
- Terramar [25>] (KP)

DODGE

New diagnostic systems have been developed for the model:

- Charger [24>] (LB)

DR

New diagnostic systems have been developed for the model:

- DR5 [16>20]

DS

New diagnostic systems have been developed for the models:

- DS4 [21>] (D41)
- DS3 Crossback [19>] (D34)

EMC

New diagnostic systems have been developed for the models:

- 4 [25>]
- 7 [25>]
- Wave 2 [23>24]

EVO

New diagnostic systems have been developed for the models:

- EVO 5 [23>]
- EVO 5 [20>22]



FIAT

New diagnostic systems have been developed for the models:

- Doblò [22>] (360)
- Ducato [21>] (250/505/MCA)
- Qubo L [26>] (360)

FORD

New diagnostic systems have been developed for the models:

- Capri [24>] (CX740)
- E Series / E Series Super Duty
- Explorer EV [24>] (CX740)

FOTON

New diagnostic systems have been developed for the models:

- Mars 7 [23>]
- Mars 9 [23>]
- Tunland G7 [22>]
- Tunland V7 [23>]
- Tunland V9 [24>]
- Tunland Yutu [19>]

GEELY

New diagnostic systems have been developed for the models:

- Haoyue Pro [24>] (NC31)
- Vision X3 Pro [21>] (NX21)

GENESIS

New diagnostic systems have been developed for the models:

- GV60 [22>] (JW1)
- GV70 [21>24] (JK1)
- G80 [25>] (RG3) Facelift
- GV80 [24>] (JX1) Facelift
- G90 [22>] (RS4)

HYUNDAI

New diagnostic systems have been developed for the models:

- Azera [23>] (GN7)
- Bayon [24>] (BC) Facelift
- i20 [24>] (BC/BI) Facelift
- i30 [25>] (PD) Facelift
- i30 [25>] (PD) Kombi Facelift
- Grandeur [23>] (GN7)



- Ioniq 5 [21>24] (NE)
- Kauai [23>] (SX)
- Kona [23>] (SX)
- Palisade [26>] (LX3)
- Santa Fe [23>] (MX5)
- Sonata VIII [24>] (DN8) Facelift
- Tucson [24>] (NX) Facelift

IVECO

New diagnostic systems have been developed for the model:

- Fidato [24>] (SV65C)

JAC MOTOR

New diagnostic systems have been developed for the models:

- iC5 [20>]
- S4 [18>]
- S7 [17>]
- J7 [20>]
- Jiayue A5 [20>]
- Jiayue X4 [20>]
- Jiayue X7 [20>]
- Jiayue X8 [20>]
- Sihao A5 [20>]
- Sihao QX [21>]
- Sihao X4 [20>]
- Sihao X6 [22>]
- Sihao X7 [20>]
- Sihao X8 [20>]
- T8 [18>] Pick-Up

JEEP

New diagnostic systems have been developed for the models:

- Compass [25>] (J4U)
- Grand Cherokee [21>] (WL)
- Grand Wagoneer [22>] (WS)
- Wagoneer [22>] (WS)
- Wagoneer S [24>] (KM)

KIA

New diagnostic systems have been developed for the models:

- Carnival IV [25>] (KA4) Facelift
- Ceed [25>] (CD) Facelift



- Ceed [25>] (CD) Sportswagon Facelift
- EV5 [24>] (OV)
- EV6 [25>] (CV) Facelift
- EV9 [24>] (MV)
- K4 [25>] (CL4)
- K5 [24>] (DL3) Facelift
- K8 [25>] (GL3) Facelift
- ProCeed [25>] (CD) Facelift
- Sorento IV [24>] (MQ) Facelift
- Sportage [21>25] (NQ5)
- Stonic [25>] (YB) Facelift
- XCeed [25>] (CD) Facelift

LDV

New diagnostic systems have been developed for the models:

- EV30 [19>] (SV3C)
- Deliver 7 [24>] (SV65C)
- T60 MAX [25>] (SK8C-8840)

MAN

New diagnostic systems have been developed for the model:

- eTG-E [19>] (UY-UZ)

MAXUS

New diagnostic systems have been developed for the models:

- Deliver 3 [19>] (SV3C)
- Deliver 7 [24>] (SV65C)
- EV30 [19>] (SV3C)
- T60 MAX [25>] (SK8C-8840)
- T90 [21>] (SK8C)
- V70 [23>] (SV65C)

MERCEDES-BENZ

New diagnostic systems have been developed for the models:

- AMG GT [23>] (192) Coupé
- CLE [23>] (236) Cabrio
- CLE [23>] (236) Coupé
- EQT [23>] (420)
- G [24>] (465)
- GLE [19>] (167)
- GLE [20>] (167) Coupé
- SL [22>] (232)



- SL [25>] (232) Maybach

MG

New diagnostic systems have been developed for the models:

- MG3 [24>] (ZP22)
- ZS [24>] (ZS32)

MINI

New diagnostic systems have been developed for the models:

- Mini [24>] (J01)
- Mini Aceman [24>] (J05)

MINISUBISHI

New diagnostic systems have been developed for the models:

- Delica D:2 [21>] (MB27S/MB37S/MB47S)
- Outlander [22>] (GM/GN)

NEXTEM

New diagnostic systems have been developed for the models:

- Humpback/Balena [24>]
- Orca [21>]

OPEL

New diagnostic systems have been developed for the models:

- Astra-L [22>]
- Astra-L [22>] Sports Tourer
- Combo-E Life [18>]
- Corsa-F [19>]
- Frontera [24>] (OV24)
- Grandland [24>] (OV64)
- Mokka [21>]
- Movano C [24>]
- Vivaro-C [19>] (K0)
- Zafira-Life [19>] (K0)

PEUGEOT

New diagnostic systems have been developed for the models:

- 2008 [19>] (P24)
- 208 [19>] (P21)
- 3008 [24>] (P64)
- 308 [21>] (P5)
- 308 [21>] (P5) Station Wagon



- 408 [22>] (P54)
- 5008 [24>] (P74)
- Boxer [24>]
- Expert [16>] (K0)
- Partner [18>] (K9)
- Rifter [18>] (K9)
- Traveller [16>] (K0)

POLESTAR

New diagnostic systems have been developed for the model:

- 3 [24>]

RAM

New diagnostic systems have been developed for the model:

- Promaster [21>] (VF)

SEAT

New diagnostic systems have been developed for the models:

- Leon [24>] (KL1) Facelift
- Leon [24>] (KL8) Sportstourer Facelift

SKODA

New diagnostic systems have been developed for the models:

- Elroq [25>] (PYL)
- Enyaq iV [21>] (5AZ)
- Enyaq iV [22>] (5AC) Coupé
- Kodiaq [24>] (PS7)
- Octavia [24>] (NX3) Facelift
- Octavia [24>] (NX5) Kombi Facelift
- Superb B9 [24>] (NZ3)
- Superb B9 [24>] (NZ5) Wagon

SUZUKI

New diagnostic systems have been developed for the models:

- Alto [14>21] (HA36S)
- Carry [13>] (DA16T/DA17V/DA17W)
- Ciaz [15>25] (AVB)
- Ertiga [18>] (NC)
- Fronx [23>] (WDB3S/ WEB3S)
- Ignis [16>] (ATK)
- Jimny [18>] (A6G)
- Solio [15>20] (MA26S/MA36S/MA46S)



- Solio [21>] (MA27S/MA37S/MA47S)
- SX4 II S-Cross [16>21] (AKK) Facelift
- SX4 III S-Cross [22>23] (AKK)
- SX4 III S-Cross [24>] (AKK) Facelift
- Swift [17>24] (A2L)
- Swift [24>] (AOL)
- Vitara [15>23] (APK)
- Wagon R [17>] (MH35S/MH55S)

SWM

New diagnostic systems have been developed for the model:

- G01F [22>]

TOYOTA

New diagnostic systems have been developed for the models:

- Proace City [20>]
- Proace Max [24>]

VOLKSWAGEN

New diagnostic systems have been developed for the models:

- California T7 [24>] (ST)
- e-Crafter [19>] (SY-SZ)
- Golf VIII [24>] (CD1) Facelift
- Golf VIII [24>] (CG5) Variant Facelift
- ID.3 [20>] (E11/E12)
- ID.4 [21>] (E21/E81)
- ID.5 [22>] (E39)
- ID.6 [22>] (E4)
- ID.7 [23>] (ED2)
- ID.Buzz [22>] (EB)
- Multivan T7 [24>] (STM) Facelift
- Passat B9 [24>] (CJ5)
- Tiguan [24>] (CT1)
- Tayron [24>] (R41)
- T-Roc [25>] (A2)

VOLVO

New diagnostic systems have been developed for the models:

- ES90 [25>]
- EX90 [24>]



SUPERCAR

FERRARI

New diagnostic systems have been developed for the models:

- 296 GTB [21>] (F171)
- 296 GTS [22>] (F171)
- SF90 Stradale [20>] (F173)
- Roma [20>] (F169)
- SF90 Stradale [21>] (F173) Spider
- Daytona SP3 [22>] (F150)
- 12Cilindri [24>] (F167)
- 12Cilindri [24>] (F167) Spider

MASERATI

New diagnostic systems have been developed for the models:

- Grecale [22>] (M182)
- GranTurismo [23>] (M189)

