

# KONFORT Series 700

**Simple like a smartphone,  
high-performing like a KONFORT**



**TEXA**

# KONFORT A/C stations

The **KONFORT 700 range** includes **12 models** with different specifications and operating modes, for servicing vehicle air conditioning systems containing refrigerants R134a, R444a, R456a, R1234yf or R744 (CO<sub>2</sub>).

The **KONFORT 700 range** is divided in **KONFORT TOUCH** and **KONFORT**, based on the display the station is equipped with.

The display can be a touchscreen type, allowing simple and quick interaction with the station, or a standard type that requires using the practical button panel.

## KONFORT TOUCH range



## KONFORT range



The range is produced on an assembly line that is the only one of its kind in the world to ensure the ultimate in quality and lasting reliability.

The components used all have exceptional features and guarantee refrigerant recovery and filtering efficiency above 95%. The neat design combines easy handling, sturdiness and safety to make all maintenance operations simple and easy.





# Simple, quick, smart just a “touch” for recharging

Its **more than ten years’ leadership** in the vehicle A/C service and recharge field has allowed TEXA to obtain the approval and recommendation by the major vehicle manufacturers worldwide. From the same experience, TEXA has given birth to **KONFORT TOUCH**, a range of charging stations characterised by exceptional manufacturing quality, designed for all the A/C service operations on vehicles that use refrigerants **R134a, R444a, R456a** and **R1234yf**.

In a **simple, quick, smart** way, and with the utmost ease of use.

## The KONFORT TOUCH range is:

**Simple**, because its **10-inch** or **7-inch colour touchscreen display**, the Android™ operating system and its main service dashboard allow users to customise the charging operations and start them really easily.

**Quick**, because the navigation menu enhances the user experience and gathers all the key functions in the main page, allowing users to complete the operations with absolute precision and in just a few steps.

**Smart**, because its advanced connectivity allows it, for example, to update automatically, receive remote assistance and connect to other devices, such as printers and smartphones. Moreover, it uses a search algorithm that identifies the vehicle in the wide database by simply entering a keyword, therefore avoiding the classic selection of make and model.

***Simple and intuitive***  
*thanks to its wide touchscreen display*

***Even quicker***  
***A/C service***

***Flexibility of use***  
*with the built-in Wi-Fi*



# Nine TOUCH models to meet every need

The KONFORT TOUCH range includes nine models: each of them is rich in exclusive functions and special features, for every operational need.

## KONFORT 780 TOUCH BI-GAS

(R134a/R456a and R1234yf/R444a)

The **top of the range**. Handles two refrigerant gases simultaneously, as it has **two tanks** and **two separate circuits for recovery, recycling and recharging**. The service process is **automated**. Other distinctive features: **airtight oil bottles**, **scale locking/unlocking** device, refrigerant weight accuracy check system, **automatic cleaning** device for all the hydraulic ducts.



## KONFORT 770s TOUCH

(R1234yf)

Characterised by an exceptional build quality, it was designed to allow all the operations relating to A/C service on the vehicles equipped with **R1234yf refrigerant gas**. **The station** comes with an automatic leak detection system and **EN837 Class 1** certified pressure gauges. The exceptional characteristics of their components guarantee a refrigerant recovery rate of over 95%.



## KONFORT 760 TOUCH KONFORT 760 BUS TOUCH

(R134a/R456a or R1234yf/R444a)

Both high-performing, also equipped with **airtight oil bottles**, **fully automatic** service management, scale locking/unlocking device and **refrigerant weight accuracy** check.

Moreover, the **760 BUS TOUCH** version is designed for larger systems and equipped with a larger tank, pump and compressor.



## KONFORT 720 TOUCH

(R134a/R456a or R1234yf/R444a)

"Entry level" version in the range, KONFORT 720 TOUCH has **automatic functions** for the refrigerant recovery and recycling and for the oil drain. Quantities of oil and UV tracer are controlled by an **automatic valve system**. The operator therefore only has a few simple tasks to carry out.



## KONFORT 712 TOUCH

(R134a/R456a or R1234yf/R444a)

It is a **mid-range** model which boasts the typical technical features of the top-range models such as the automatic maintenance service management and the measuring of the amount of oil recovered with an electronic scale.



## KONFORT 710 TOUCH

(R134a/R456a)

Although it is a **basic model**, it offers a series of key functions that feature the KONFORT 700 Series, including automatic leak detection, refrigerant check with electronic scale, automatic timed oil and UV tracer injection, and high efficiency refrigerant recovery (over 95%).



## KONFORT 707 TOUCH KONFORT 707 TOUCH OFF ROAD

(R134a/R456a or R1234yf/R444a)

This model is **basic, easy to use** and with advanced design features. It is equipped with a filter dryer that allows performing up to 300 maintenance services, with a scale locking system for greater stability, with a touch screen display that guarantees simple and intuitive interaction and with four castor wheels for easy handling. The station records the services performed, storing the data related to the completed maintenances, and is **also available in the OFF ROAD version** for services in harsh operating conditions.





# A large display for great results

The KONFORT TOUCH charging stations are equipped with a **10-inch colour multi-touch screen display\***, which gives them great usability and allows always having a clear view of the operations to perform. Moreover, the **innovative graphic interface** has been developed to ensure a really intuitive software user experience, making it easier to **quickly read the data** displayed.

Data reading is best supported by the high resolution and 400 nits brightness.

An interesting feature is also the possibility for the operator to choose between a light or dark theme for the background. The display on the KONFORT TOUCH stations features the **glove-touch technology**, which ensures perfect use while wearing different types of work gloves.



\* KONFORT 707, 710, 712 the display is 7"

KONFORT TOUCH



Industrial **colour** touchscreen  
display

**Glove-touch**  
technology

Intuitive  
**graphic interface**

**Quick** data  
reading



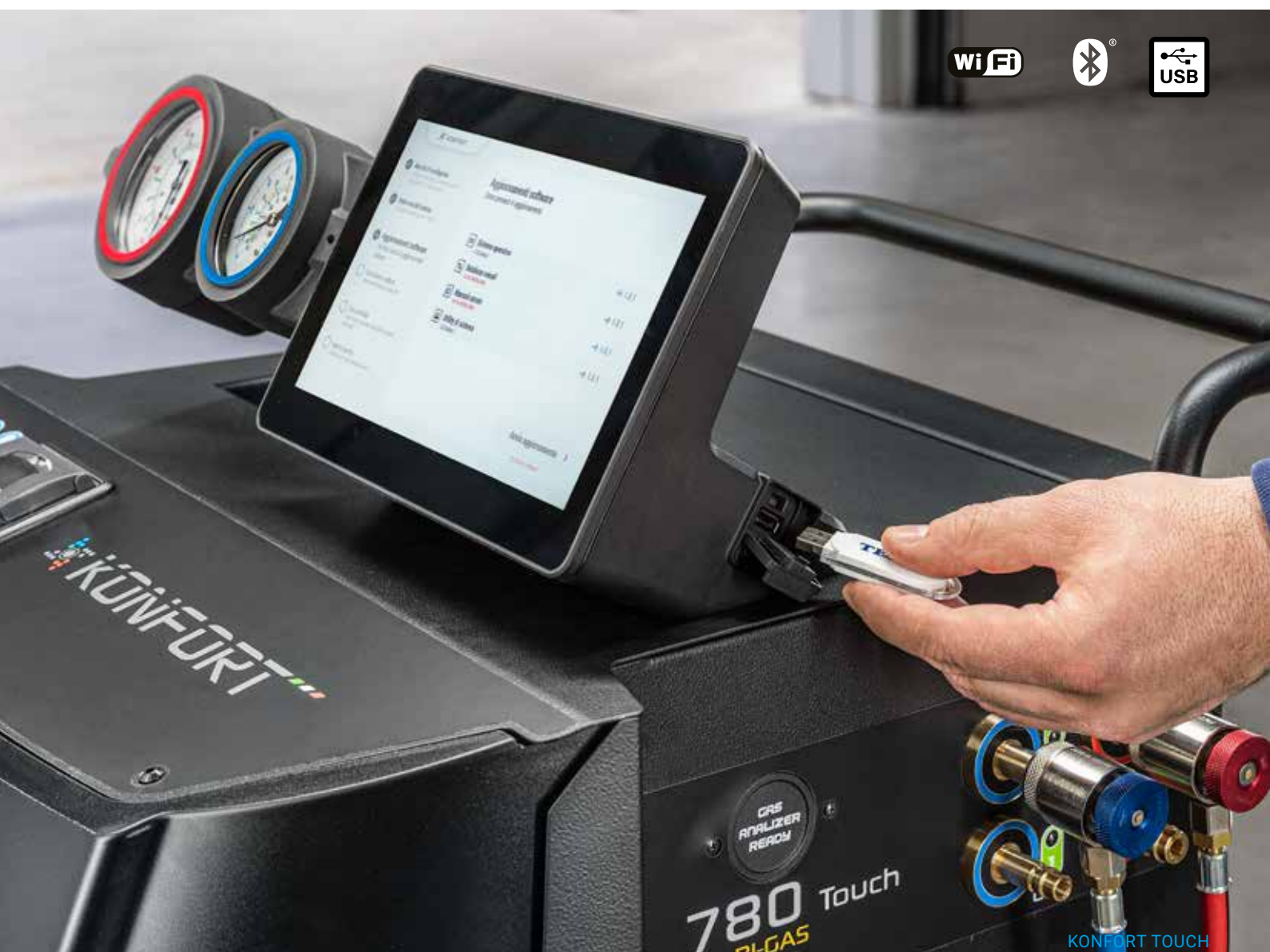
# Many connection modes

The great ease of use of the KONFORT TOUCH range and its smart approach also lie in the possibility to use the **Wi-Fi connectivity** for a series of activities, such as:

- printing reports in A4 format;
- receiving software and firmware updates in real time;
- receiving remote technical assistance;
- connecting to the myTEXA portal;
- connecting with the KONFORT Mobile APP.

The **Bluetooth module** also allows connecting the stations with several accessories, such as the A/C efficiency kit.

The stations are also equipped with a practical **USB port**, which can be used to back up the reports of the services performed and the entire system. It is very useful also to install software updates if the workshop does not have a Wi-Fi network.





## Paper reports always at hand

Besides the built-in thermal printer, KONFORT TOUCH allows printing the reports of the services performed also via Wi-Fi and in **A4 format**, using any **printer connected to the workshop's Wi-Fi network**.

## KONFORT APP

Thanks to a **dedicated APP**, the stations communicate with Android and iOS smartphones, so that operators can follow the progress of the service and charging procedures also remotely. The technician receives a notification in case of faults and when the service is complete. The new APP also allows you to view and manage the performed maintenance services easily, even when the station is turned off.



***Printing flexibility  
with the printers connected  
to the workshop's Wi-Fi***





# Android operating system everything is even easier

The KONFORT TOUCH stations are designed to be **extremely well-functioning** and achieve the **maximum simplification** of the maintenance and charging operations.

To reach this goal, the **Android 10 embedded operating system** is used.

This choice allows better familiarity in activating the various controls, with a very intuitive visual language and an **interface rich in infographics**.

The **software updates are performed automatically** and securely.

**Android 10**  
operating system

**Automatic updates**  
for software and firmware







# Simple and intuitive user interface

## starting the service is immediate

The interface is designed to provide **all the necessary information in a single screen**; this way, users can have direct access to the most useful operations. In next to no time, you will move from the initial station activation phases to carrying out the service.

**The menu**, which can be browsed really easily, makes the most of the large display and **minimises the “steps” required to start a charging service**. Moreover, the search mode **“Smart selection by model”** allows you to find the vehicle you are working on by simply entering one or more **keywords**.

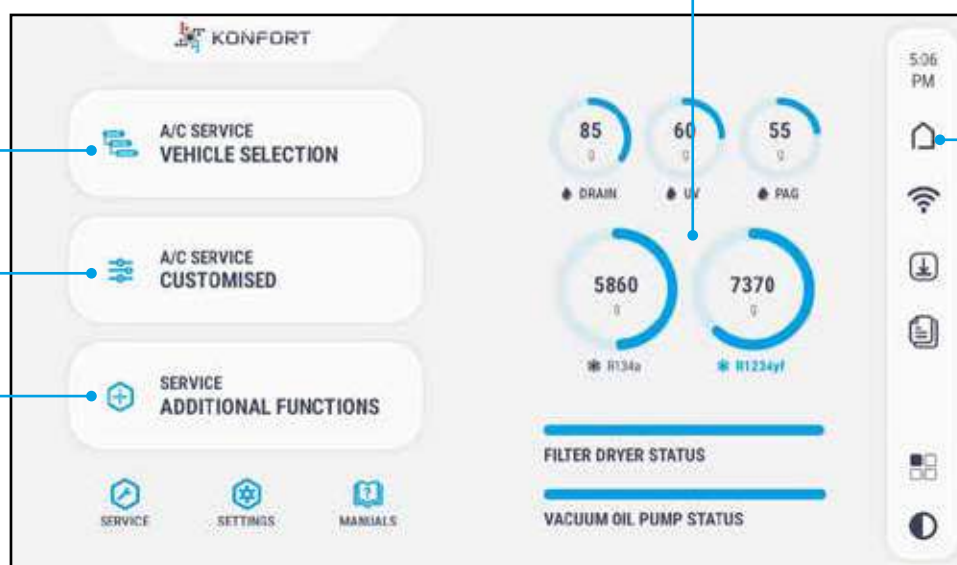
Below is an overview of the main software screens, from the service selection to the charging phases and the remote after-sales assistance request:

Check **the status of the oils, levels of refrigerant and consumables**.

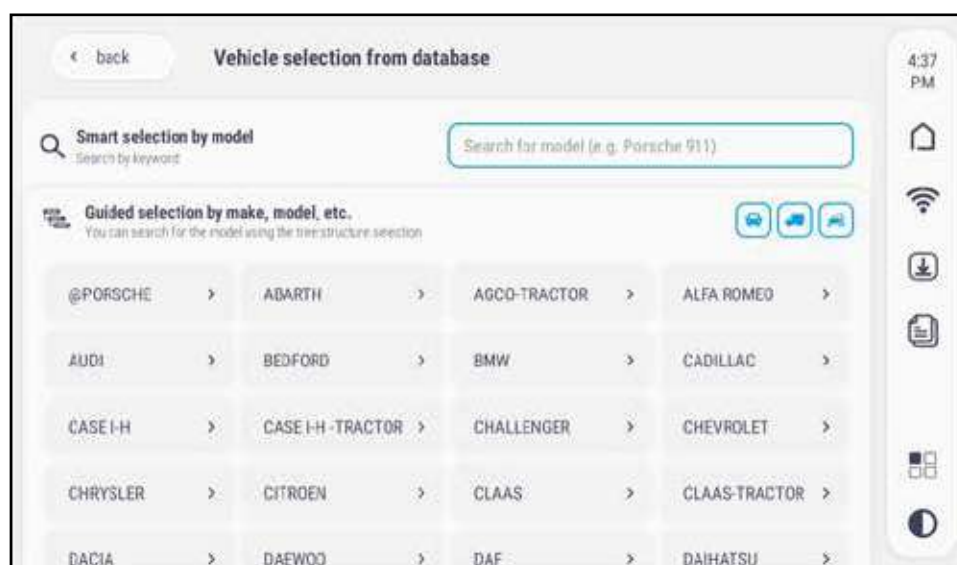
**A/C Service Vehicle Selection**  
to access the service via TEXA Database or myDatabase.

**Customised A/C Service** to set the parameters manually.

**Additional functions** such as flushing or the leak check with Forming Gas.



Quick menu to: access the **Wi-Fi settings**, the **report list**, check the availability of **software updates**, access the **Applications** page and activate/deactivate the **dark mode**.



**Smart selection by model\*.**

Enter a keyword in order to find more rapidly the vehicle you wish to work on.  
It also works with words in proximity.

\*The function is not available on KONFORT 770 TOUCH





All the operating parameters can be set in a single screen.



«Recovery» phase: the screen highlights the time remaining until the refrigerant recovery operation is complete.



«Vacuum» phase: a vacuum is induced in the vehicle's A/C system to check for possible leaks.



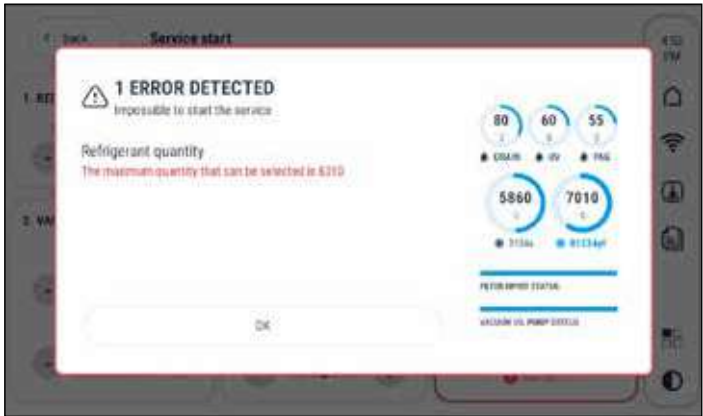
«Oil injection» phase: the system injects the correct amount of oil in the vehicle system to lubricate it.



«Refrigerant charge» phase: the station charges the correct amount of gas into the vehicle system.



Once the operation is complete, the report is saved automatically and can be printed as you prefer.



Example of a detected error: KONFORT TOUCH has detected a failure, in this case the amount of refrigerant is not enough.



Applications page: to request remote assistance, access the settings, and check for updates.

# Online technical assistance

## A specialised operator always available

The owner of a KONFORT TOUCH station can be sure not only to use a highly technological tool, but also to be able to count on constant after-sales assistance.

To use this service, simply connect the station to the workshop's Wi-Fi network, access the Applications page from the software interface and select Remote Assistance.

From here, **it is possible to ask for the help of a specialised technician who will take control of the KONFORT TOUCH remotely** to carry out maintenance activities in support of the operator at the workshop. For example, the technician can activate the station, check its operating status and any errors that it may have set, calibrate the scales, check the solenoid valves, and much more.



# KONFORT RANGE

## KONFORT 744

(CO<sub>2</sub>)

The KONFORT 744 implements innovative solutions and differs from the other models in the KONFORT series as it is designed and made specifically to interface with the latest A/C systems that use the **R744 (CO<sub>2</sub>)** refrigerant. Yet, it is just as easy to operate as the KONFORT stations dedicated to the R134a and R1234yf refrigerants. KONFORT 744 is fully automatic and capable of completing the entire service procedure without input from the operator. It also achieves the highest possible levels of precision: in fact, the quality of its components and its design allow extreme **recharging accuracy**, with a maximum tolerance of only 10 grams (2 grams for oil). Special attention has also been paid to the system for **releasing CO<sub>2</sub> into the atmosphere. This takes place in a controlled manner** to ensure the safety of the operator and of the system itself.

The KONFORT 744 also incorporates an accurate system for **measuring the concentration of CO<sub>2</sub>** in the surrounding air. If this approaches a dangerous level, the unit warns the operator and suspends charging.





## KONFORT 705R KONFORT 705R OFF ROAD

(R134a/R456a)

KONFORT 705R is the ideal solution for workshops that need to offer their customers an **impeccable assistance service** while keeping a close eye on operating costs.

The KONFORT 705R is also available in an OFF-ROAD version for mechanics who have to work in tough conditions. It is equipped with two **oversized rear wheels** and the tyres are filled with a special anti-puncture foam. Instead of front wheels, the station has a robust metal bar for **greater stability during use**.

The station is also fitted with a scale locking system to prevent the loss of calibration while moving on a rough ground.



# A wide range of accessories for expanded functionality

The KONFORT models can be used in combination with a range of optional accessories that expand their functionality and potentials, such as:



## Thermal printer

It is possible to install a very useful thermal printer, to generate at any time an accurate report of all the operations performed.



## Refrigerant identifier kit

This device immediately identifies the type of refrigerant used in the vehicle, R134a or R1234yf, and checks its purity. The entire operation takes approximately one minute. If the refrigerant is found to be unsuitable or contaminated, the station warns the technician and stops the operation.



## REC+

It guarantees the safe evacuation of the refrigerant, whichever its nature. It complies with the technical, performance and safety requirements of the most important vehicle manufacturers and allows recovering up to 95% of the refrigerant in the system. At the end of the recovery, the contaminated refrigerant can be drained into a tank and disposed of.



## Forming Gas kit

It allows solving quickly and efficiently any leak detection problems in A/C systems that use refrigerants R134a and R1234yf. Using the kit is a strategic solution, since it allows identifying the smallest gas leaks with precision. This is due to the molecular size of the Forming Gas, much smaller than any refrigerant.



## Flushing kit

Flushing is the mechanical operation carried out to clean the air conditioning system components of a vehicle. TEXA offers a kit that includes: a supplementary 6-litre capacity tank with a contamination indicator, a stainless steel filter which can easily be removed for cleaning, high flow hoses with 5-mm internal diameter, a case containing the complete series of universal adapters.



## A/C system efficiency kit

It performs a dynamic check on the output temperature of the A/C system vents. At the end of the test, the KONFORT TOUCH charging station produces a detailed report certifying the actual performance of the vehicle's A/C system.



# TXR ID

## the portable refrigerant gas identifier



*R134a or R1234yf*

*Built-in software interface*

*Activated carbon filter*

*Built-in Bluetooth and Wi-Fi modules*

*Complete test in 30 seconds*

*5.4" touch screen display*





# The indispensable tool for zero risks

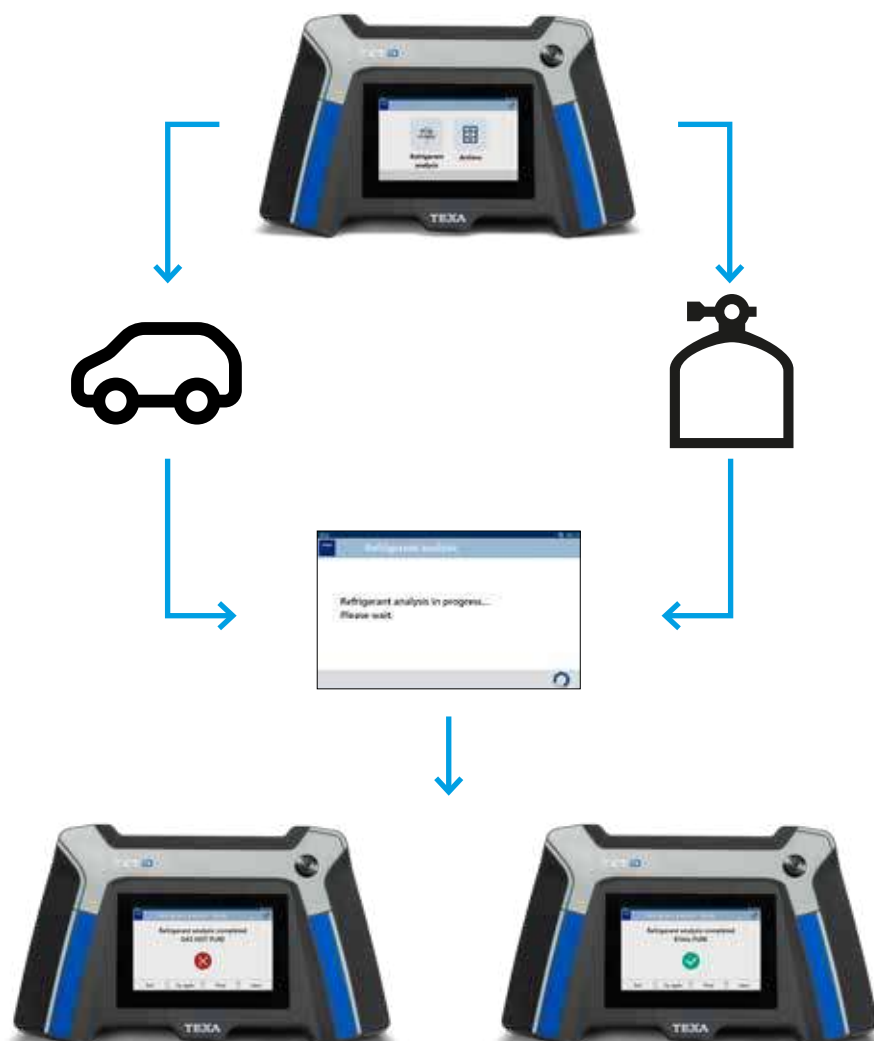
TXR ID is the new **portable refrigerant identifier** that allows **identifying the type of gas, R134a or R1234yf** in the vehicle or in the tank for recharging and **checking its purity**.

This device, thanks to the **activated carbon filter** designed by TEXA, allows an accurate analysis that is not compromised by external factors.

Using TXR ID **guarantees carrying out an A/C system recharging service properly**, eliminating risks and the costs caused using a refrigerant that is not appropriate.

Furthermore, the software interface with **guided procedure**, the **5.4" touch screen display** and the built-in **Bluetooth and Wi-Fi modules** allow completing all the operations easily, quickly and automatically.

## Overview of the operation



# TXR ID

## Hardware

### The display

Equipped with a 5.4" touch screen display with a 800x400 px resolution.



### The additional components

Equipped with a lithium battery, an optional thermal printer and an activated carbon filter for an accurate analysis.



### Specific connections

Equipped with connections, one for the R134a refrigerant and one for R1234yf.



## TECHNICAL DATA SHEET

### FEATURES

- identified gases: R134a and R1234yf
- built-in software interface
- activated carbon filter for accurate analysis

### CONNECTIVITY

- Bluetooth
- Wi-Fi

### MANAGEMENT SOFTWARE AND HARDWARE COMPATIBILITY

- Stand alone



### DISPLAY

- 5.4" touch screen

# TXR ID

## The software



**Main menu**



**Analysis phase**



**Positive result**



**Negative result**

## Advantages

**Stand-alone tool, quick and automatic**

**30"**

**Accurate analysis thanks to the activated carbon filter**



**It eliminates any risk and cost caused by the use of an inappropriate refrigerant**





# Production and quality certified

## ISO TS 16949 quality system

The KONFORT TOUCH range benefits from new developments in materials, technologies and automated production procedures that resulted in TEXA gaining an **ISO TS 16949** certification.

All phases are subject to strict quality control, from component selection and development to machining, assembly, distribution and after-sales service.

After assembly, the stations enter the testing department where the electrical system is tested and the scales sensors and pressure transducers are calibrated. Functional testing is then performed to verify that all components and devices respond correctly and perform according to specifications.

Rigorous testing eliminates the risk of defects in the hydraulic system and ensures that all parts are effectively sealed. The final stage of testing takes place in a special sealed chamber and involves the injection of helium into the tank and the recharge circuit. Helium is used because its particularly small molecules are able to find even minute leaks.

**The KONFORT charging stations conform to European CE/PED safety standards**, to the American standards governing refrigerant purity (SAE J2099 for both R134a and R1234yf) and to those governing efficiency in the recovery of at least 95% of used refrigerant (SAE J2788 for R134a and SAE J2843 for R1234yf).



# Specific training for A/C servicing

TEXA believes offering customer training to be particularly important. Adequate technical competence and the correct use of diagnostic tools are critical to the success of a workshop business.

The teaching methods used in TEXA courses are based on an ideal mix of theory and practical elements.

Practice plays a fundamental part, as it combines testing and simulations with use of the technicians' own TEXA diagnostic tools, thus stimulating a more active and dynamic participation and effective learning.



## **AC-307/2008: REFRIGERANT HANDLING**

**AIM:** Acquire all the minimum knowledge and know-how required by Reg. 307/2008.

All vehicle repairers that carry out recovery activities of the R134a gas from a motor vehicle's A/C system must obtain the qualification to use such gas by attending a training course organised by a Certified organisation.

Following the DPR (Decree of the President of the Italian Republic) no.146/2018, the F-gas database was created for the registration of companies and people that purchase F-gas and therefore must both comply with the subscription and be qualified.

TEXA has certified its training course, in compliance with the contents of the DPR (Decree of the President of the Italian Republic) no. 146/2018, and equipped all its training centres in Italy according to the characteristics required by the Decree.

**DURATION:** 8 hours



## **G16C: MAINTENANCE AND DIAGNOSTIC TECHNIQUES OF THE A/C SYSTEMS WITH THE R1234YF AND R744 GASES**

**AIM:** Learn the key points of the European legislation and the technical properties of the R1234yf and R744 refrigerants. Know how to service cooling systems with the R1234yf and

R744 gases and learn the requirements for the storage and the procedures for recharging and servicing in complete safety.

Know how to carry out the recovery, recycling and recharging procedures correctly with the R1234yf and R744 gases through two examples on a Toyota Prius and Mercedes-Benz.

**DURATION:** 8 hours



## **D10C: FAULT DIAGNOSIS IN A/C SYSTEMS**

**AIM:** Learn to carry out the maintenance on A/C systems. Learn the correct troubleshooting procedure for both electrical and mechanical faults.

Description of a modern A/C system; the operating pressures, the most frequent faults and how to find them; how to perform a quick and efficient leak test using different techniques (vacuum method, search via FormingGas, search via dye); how to perform a diagnosis on the A/C system using TEXA's tools; analysis of a very peculiar fault case.

**DURATION:** 8 hours (available also online)

# Technical specifications

	780 TOUCH	770S TOUCH	760 TOUCH	760 TOUCH BUS	720 TOUCH	712 TOUCH	710 TOUCH	707 TOUCH	707 TOUCH OFF ROAD	744	705R	705R OFF ROAD
R134a compatible	●		●	●	●	●	●	●	●		●	●
R456a compatible	●		●	●	●	●	●	●	●		●	●
R1234yf compatible	●	●	●	●	●	●		●	●			
R444a compatible	●		●	●	●	●	●	●	●			
CO2 compatible										●		
Dual refrigerant management	●											
CAR and TRUCK compatible	●	●	●	●	●	●	●	●	●	●	●	●
BUS compatible				●								
Fully automatic service management	●	●	●	●		●		●	●	●		
Automatic leak detection	●	●	●	●	●	●	●	●	●	●	●	●
Refrigerant quantity measurement with electronic scales	●	●	●	●	●	●	●	●	●	●	●	●
Air Tight Bottle oil anti-contamination system (patent pending)	●	●	●	●						●		
Automatic oil management with electronic scales	●	●	●	●						●		
Timed oil injection					●	●	●	●	●		●	●
Timed UV tracer injection					●	●	●					
Recovered oil quantity measurement with electronic scales	●	●	●	●		●				●		
Hybrid vehicle compatible	●	●	●	●	●	●	●	●	●	●	●	●
Electric vehicle compatible	●	●	●	●	●	●	●	●	●	●	●	●
Automatic service management (DATABASE)	●		●	●	●	●	●	●	●	●	●	●
Customised service management	●	●	●	●	●	●	●	●	●	●	●	●
FPS (Fan Protection System)	●	●	●	●	●	●						
Flushing system for refrigerant change	●											
Flushing system for oil change	●	●	●	●	●	●	●	●	●	●	●	●
Refrigerant identifier kit	●	●	●	●		●		●	●			
KONFORT REPORTS on SD card										●	●	●
Printout of completed services via Wi-Fi	●	●	●	●	●	●	●	●	●			
Thermal printer	●	●	●	●	●	●	●	●	●	●	●	●
High visibility TFT colour display										●		
7" touchscreen display						●	●	●	●			
10" touchscreen display	●	●	●	●	●							
DATABASE and service management by SD card										●	●	

Not available



Optional



Standard





	780 TOUCH	770S TOUCH	760 TOUCH	760 TOUCH BUS	720 TOUCH	712 TOUCH	710 TOUCH	707 TOUCH	707 TOUCH OFF ROAD	744	705R	705R OFF ROAD
Compatibility with KONFORT APP	●	●	●	●	●	●	●	●	●			
2 x 12 kg tanks	●											
10 kg tank						●		●	●	●	●	●
12 kg tank					●							
20 kg tank		●	●				●					
30 kg tank				●								
Charging accuracy +/- 10 g										●		
Charging accuracy +/- 15 g	●	●	●	●	●	●	●	●	●		●	●
High efficiency refrigerant recovery (over 95%)	●	●	●	●	●	●	●	●	●		●	●
Two-stage vacuum pump	●	●	●	●	●	●	●			●		
100 l/min single stage vacuum pump								●	●		●	●
Automatic oil bottle recognition (patent pending)	●	●	●	●						●		
Scales locking system	●	●	●	●				●	●	●		●
Operating mode: DATABASE	●		●	●	●	●	●	●	●		●	●
Operating mode: CUSTOMISED SERVICE	●	●	●	●	●	●	●	●	●	●	●	●
Operating mode: MY DATABASE	●	●	●	●	●	●	●	●	●	●	●	●
Multi-language software	●	●	●	●	●	●	●	●	●	●	●	●
Automatic service hose length compensation	●	●	●	●	●	●	●	●	●	●	●	●
Automatic maintenance alarm	●	●	●	●	●	●	●	●	●	●	●	●
Simplified maintenance	●	●	●	●	●					●		
Management of non-condensable gases	●	●	●	●	●	●	●	●	●		●	●
Remote assistance	●	●	●	●	●	●	●	●	●			
Flushing kit	●	●	●	●	●	●	●					
A/C system efficiency kit	●	●	●	●	●	●	●	●	●			
Automatic, high-precision oil injection	●	●	●	●						●		
Automatic updates	●	●	●	●	●	●	●	●	●			
2 manual service hose control valves					●		●			●	●	
Leak detection kit with Forming Gas	●	●	●	●						●		
Leakage detection kit with forming gas (based on Mercedes specifications)	●	●	●	●						●		
Automatic metering of refrigerant release										●		
Automatic monitoring of CO2 concentration in atmosphere										●		

Not available



Optional



Standard



# Simplifying the present, anticipating the future



Founded in 1992  
60,000 covered sq. m  
in an area of over 100.000 mq  
2 new plants



7 subsidiaries  
in the world



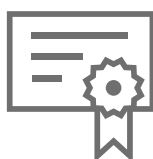
Approximately 1,000 TEXA  
employees in the world  
over 400 technical profiles



700 Distributors  
over 200,000 active  
customer workshops



Patents  
85 Master, 165 total



Certifications:  
ISO 9001  
IATF 16949  
E.P.A.  
ISO/IEC27001  
TISAX  
ISO 14001:2015

## WARNING

The trademarks and logos of vehicle manufacturers in this document have been used exclusively for information purposes and are used to clarify the compatibility of TEXA products with the models of vehicles identified by the trademarks and logos. Because TEXA products and software are subject to continuous developments and updates, upon reading this document they may not be able to carry out the DIAGNOSTICS of all the models and electronic systems of each vehicle manufacturer mentioned within this document. References to the makes, models and electronic systems within this document must therefore be considered purely indicative and TEXA recommends to always check the list of the "Systems that can be diagnosed" of the product and/or software at TEXA authorised retailers before any purchase. **The images and the vehicle outlines within this document have been included for the sole purpose of making it easier to identify the vehicle category (car, truck, motorbike, etc.) for which the TEXA product and/or software is intended.** The data, descriptions and illustrations may change compared to those described in this document. TEXA S.p.A. reserves the right to make changes to its products without prior notice.

To check out the extensive coverage of TEXA products, go to: [www.texa.com/coverage](http://www.texa.com/coverage)

To check on IDC6 compatibility and minimum system requirements, go to: [www.texa.com/system](http://www.texa.com/system)

Apple and Apple Logo are trademarks of Apple Inc.

Google Play and Google Play Logo are trademarks of Google LLC.

The Bluetooth® brand is the property of Bluetooth SIG, Inc., U.S.A., and is used by TEXA S.p.A. under license.

Android is a trademark of Google Inc.



Visit our website  
[www.texa.com](http://www.texa.com)

Scan the QR code and  
follow us on our social media!

Copyright TEXA S.p.A.  
cod. 8801585  
06/2025 - Inglese - V13

## TEXA S.p.A.

Via 1 Maggio, 9  
31050 Monastier di Treviso  
Treviso - ITALY  
Tel. +39 0422 791311  
Fax +39 0422 791300  
[www.texa.com](http://www.texa.com) - [info.it@texa.com](mailto:info.it@texa.com)

COMPANY WITH  
QUALITY SYSTEM  
CERTIFIED BY DNV  
ISO 9001